

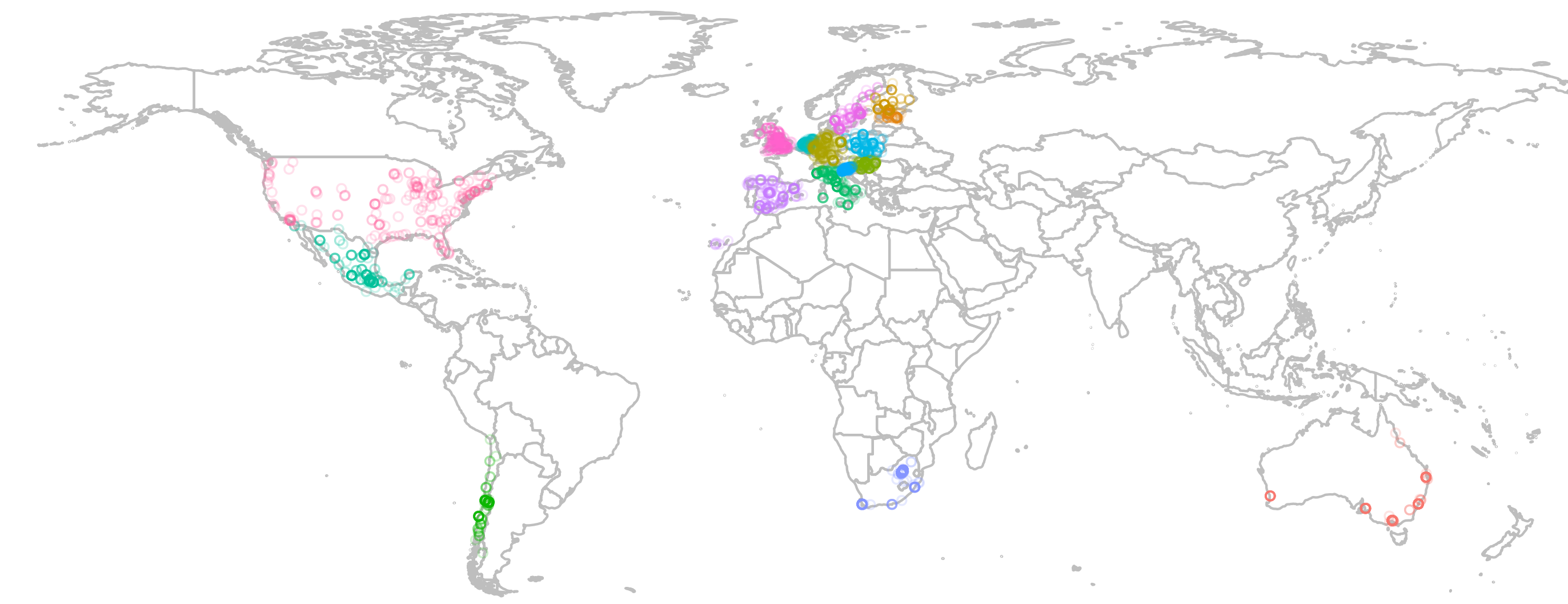
HELPING UKRAINE

Mechanisms promoting extra-group prosociality towards the Ukrainians during the 2022 invasion



Kateřina Koppová^{1*}, Dan Řezníček¹

¹LEVYNA Laboratory for the Experimental Research of Religion, Masaryk University
*koppova.katerina@mail.muni.cz



Sample: 3051 participants from 16 countries (~200 participants each), sampled from Prolific. Participant location identified by GeolP.

Individual kin and kith ties to Ukrainians increase extra-group prosociality towards anonymous Ukrainians. Moreover, belief in (not only) moralizing gods helps overcome cultural and geographical distances and increases donations to charities in comparison to non-believers.

HYPOTHESES



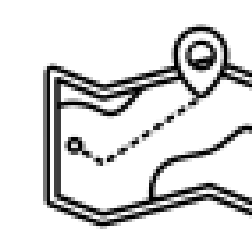
Kin & Imagined Kin

Having relatives in Ukraine decreases/increases (when imagined kin) extra-group prosociality towards the Ukrainian population.



Kith

Belief in the cooperativeness of Ukrainian friends promotes extra-group prosociality towards the Ukrainian population.



Geographical & Cultural Distance

Decreasing distance from the conflict promotes prosociality towards the Ukrainian population.



Moralizing Gods

Belief in a moralizing god helps overcome distance and promotes prosociality towards the Ukrainian population.



Predictor	MU (log scale)		Hurdle (logit scale)	
	Me	i-89%CI u-89%CI	Me	i-89%CI u-89%CI
Intercept	-0.38	-2.23 1.46	0.17	-1.84 2.41
Male sex	-0.12	-0.31 0.08	0.24	0.08 0.40
Age	0.01	-0.00 0.02	0.03	0.02 0.04
Ukrainian relatives	0.41	0.08 0.71	-0.31	-0.71 0.11
Ukrainian partner	-0.04	-0.56 0.41	-0.68	-1.26 -0.08
Ukrainian friends	0.40	0.21 0.59	-0.95	-1.13 -0.77
Not god	-0.03	-0.32 0.27	-0.21	-0.46 0.03
god	0.08	-0.24 0.41	0.04	-0.24 0.31
C distanceUA	-1.30	-5.40 2.75	3.90	-1.47 9.32
G distanceUA (log)	-0.02	-0.14 0.11	0.03	-0.12 0.17
Invasion support	0.27	-0.07 0.59	0.41	0.10 0.74



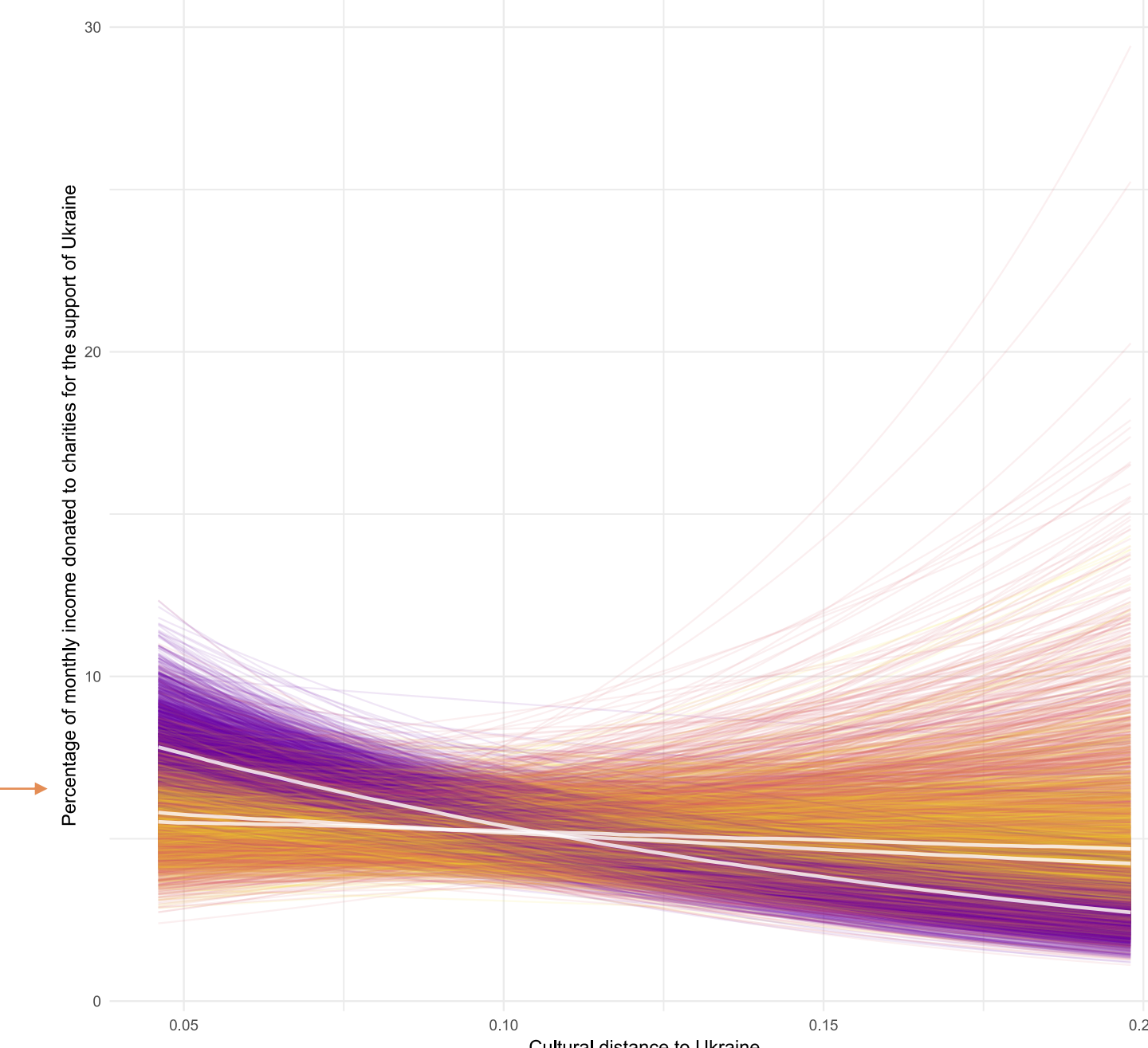
Predictor	MU (log scale)		Hurdle (logit scale)	
	Me	i-89%CI u-89%CI	Me	i-89%CI u-89%CI
Intercept	4.32	1.54 7.09		
Male sex	-0.50	-0.69 -0.31		
Age	-0.01	-0.02 -0.00		
Coeff. relatedness	0.87	0.63 1.12		
Ukrainian partner	1.45	0.75 2.13		
Kith reciprocity	0.61	0.49 0.74		
Organized religion	0.44	0.21 0.70		
C distanceUA	-3.45	-7.68 1.00		
G distanceUA (log)	-0.53	-0.67 -0.39		
Invasion support	-0.00	-0.34 0.33		



Predictor	MU (log scale)		Hurdle (logit scale)	
	Me	i-89%CI u-89%CI	Me	i-89%CI u-89%CI
Intercept	2.29	0.86 3.86	-1.71	-3.77 0.39
Male sex	-0.21	-0.33 -0.09	0.20	0.06 0.33
Age	-0.01	-0.02 -0.00	-0.03	-0.03 -0.02
Ukrainian relatives	0.35	0.07 0.64	-0.67	-1.08 -0.27
Ukrainian partner	0.09	-0.29 0.50	-1.23	-1.87 -0.62
Ukrainian friends	0.32	0.18 0.45	-1.06	-1.22 -0.90
Not god	-0.61	-1.11 -0.09	-0.08	-0.72 0.55
god	-0.53	-0.86 -0.20	0.11	-0.35 0.57
C distanceUA	-6.83	-10.23 -3.04	-3.00	-8.46 2.43
G distanceUA (log)	0.03	-0.08 0.12	0.26	0.12 0.39
Invasion support	0.13	-0.11 0.38	0.28	0.02 0.54
Not god:G distanceUA (log)	5.77	0.31 11.25	1.23	-5.80 8.45
god:G distanceUA	4.88	1.68 8.11	-0.42	-5.16 4.34

Predictor	MU (log scale)		Hurdle (logit scale)	
	Me	i-89%CI u-89%CI	Me	i-89%CI u-89%CI
Intercept	3.23	1.64 4.87	-2.20	-4.34 0.04
Male sex	-0.18	-0.30 -0.05	0.20	0.06 0.33
Age	-0.01	-0.02 -0.00	-0.03	-0.03 -0.02
Ukrainian relatives	0.33	0.06 0.62	-0.67	-1.08 -0.28
Ukrainian partner	0.09	-0.29 0.51	-1.23	-1.87 -0.63
Ukrainian friends	0.32	0.18 0.46	-1.06	-1.23 -0.90
Not god	-3.44	-5.40 -1.31	1.49	-0.95 3.90
god	-1.58	-3.14 0.01	0.89	-0.89 2.68
C distanceUA	-4.98	-8.13 -1.50	-3.08	-8.24 2.02
G distanceUA (log)	-0.06	-0.17 0.05	0.29	0.14 0.44
Invasion support	0.14	-0.10 0.38	0.28	0.03 0.54
Not god:G distanceUA (log)	0.24	0.09 0.39	-0.10	-0.27 0.07
god:G distanceUA (log)	0.11	-0.00 0.22	-0.06	-0.18 0.07

Donations to charities decreased with cultural distance to Ukraine. However, in comparison to unbelievers, donations decreased less for those who believe in god, Me = 4.88, 89% CI [1.68, 8.11], and those who believe but not in god, Me = 5.77, 89% CI [0.31, 11.25]



For unbelievers, donations to charities decreased with geographical distance to Ukraine. However, donations increased for those who believe in god, Me = 0.11, 89% CI [-0.00, 0.22], and those who believe but not in god, Me = 0.24, 89% CI [0.09, 0.39]

